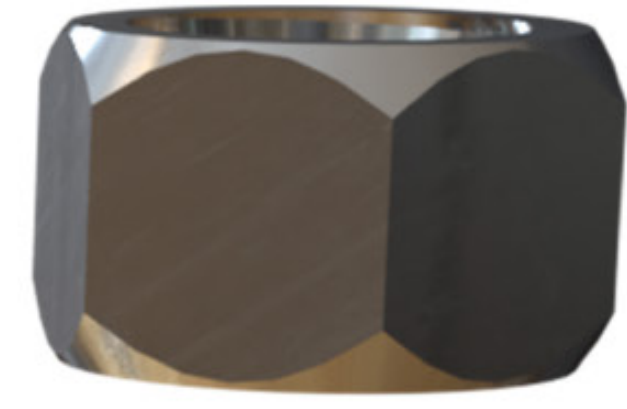


ICV Defender



Certified Protection Device for
Backflow in Plumbing Fixture Fittings ASME A112.18.3

PATENT# 11112019



Spring Actuated

Mechanical spring activated design to prevent cross-connection contamination from harmful bacteria.

Purple

EPDM Peroxide (cured) Washers

Unique peroxide cured washers that are resistant to high-temperatures and chloramines.



Full Turn

Machined Brass Stem

Designed and manufactured to McGuire's heavy pattern full brass commercial angle stop valve specification.

Laser Etched

Logo Markings

Marked with McGuire and certification logos for easy identification.

The Last Line of Defense

An integral check valve to defend against cross-contamination and backflow prevention.



Job Solutions for

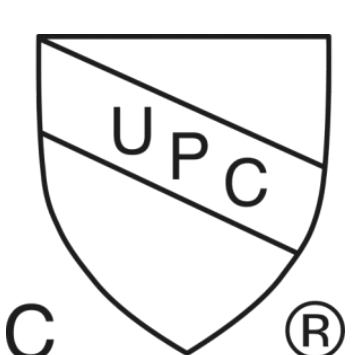
Healthcare | Hospitality | Education | Public Facilities

McGuire's patented mechanical integral check angle stop valve certified under ASME A112.18.3 Backflow Protection Devices and Systems in Plumbing Fixture Fittings. Designed to be an effective solution as a last line of defense against cross-connection contamination and backflow that results in harmful bacteria known to contaminate water systems.

The ICV Defender valve is a spring actuated integral check valve manufactured to McGuire's heavy pattern angle stop specification. It is completely serviceable and requires no third-party components. Available in IPS, sweat and compression connections. Patent #11112019.

Inquire McGuire

mcguiremfg.com



Specification Sample

McGuire Manufacturing Co., Inc.
60 Grandview Court
Cheshire, CT 06410
customerservice@mcguiremfg.com
203-699-1801 | Fax 203-699-1813

P-Trap

Lavatory and sink P-Traps shall be (1 1/4", 1 1/4" x 1 1/2", 1 1/2", 1 1/2" x 2", 2") inch chrome plated cast brass, (adjustable, ground joint swivel, NY, sweat styles) (with, without) cleanout, with (17 gauge seamless brass adjustable wall bend, cast brass nipple, 17 gauge seamless sweat tube), cast brass slip nuts, no reducing washers. P-Trap shall be provided with (shallow, deep, bell) (steel, brass, forged brass with setscrew) flange. P-Trap to have 2" water seal and rough-in complete, adapter extensions are not allowed. P-Trap shall be certified by CSA or other recognized testing authority and marked with manufacturer's name.

Part#

Supply Kit

Lavatory and closet supply kits shall include chrome plated all brass stops with brass stems, no plastic stems. Kits shall have (12", 15", 20") inch chrome plated copper risers and (shallow, deep, bell) (steel, brass, forged brass with setscrew) flange. Inlet shall be (3/8", 1/2") (IPS, sweat, sweat with 5" extension, compression). Outlet shall be (3/8", 1/2") (IPS, compression). Supply kit shall be certified by recognized testing authority, marked with manufacturer's name and comply with the SOWA (Safe Drinking Water Act) "No Lead" restrictions of ANSI NSF 61, Sec. 9.

Part#

Integral Check Valve

Supply stop valve shall be chrome plated all brass full turn supply stop valve with spring actuated integral check and brass stem. Inlet shall be (3/8", 1/2") inch (IPS, sweat, sweat with 5" compression, compression). Outlet shall be (3/8", 1/2") inch (IPS, compression). supply stop valve. Integral check supply stop valve shall be certified and recognized by testing authority and marked with manufacturer's logo and testing marks and comply with SDWA (Safe Drinking Water Act) No lead restrictions of ANSI NSF 61, Sec.

Part#

Supply Kit with Integral Check Valve

Lavatory and closet supply kits shall include chrome plated all brass full turn supply stop valve with spring actuated integral check and brass stem. Inlet shall be (3/8", 1/2") inch (IPS, sweat, sweat with 5" compression, compression). Outlet shall be (3/8", 1/2") inch (IPS, compression). Supply kit(s) shall have (12", 15", 20") chrome plated copper riser(s) and (shallow, deep, bell) (steel, brass, forged brass with setscrew) flange(s). Supply kit shall be certified by recognized testing authority, marked with manufacturer's logo and testing marks and comply with SDWA (Safe Drinking Water Act) No lead restrictions of ANSI NSF 61, Sec.9

Part#

Grid Drains

Lavatory grid drains (offset grid drains) shall be (1 1/4", 1 1/2") inch chrome plated cast brass strainer (with, without overflow) and brass lock nut. Drain tailpiece shall be 17 gauge seamless brass tube and a minimum of 6" long. Grid drain shall be certified by CSA or other recognized testing authority and be marked with manufacturer's name.

Part#

ADA Seamless Insulator Covers and PreWrapped P-Traps

All exposed lavatory and sink trim on wheelchair accessible fixtures shall be covered with seamless antimicrobial vinyl insulating outer shell. Material shall be flame retardant, fungal and bacterial resistant. Insulating kits shall include covers for drain tailpiece, all p-trap components, and hot and cold water supplier.

Part#

SANIGUARD® Antimicrobial Product Protection

SANIGUARD antimicrobial product protection inhibits the growth of common non-public health bacterial, molds and fungi that cause odors, staining and product deterioration on treated surfaces. This product is not a disinfectant and does not protect the user or others against food-borne illnesses or disease-causing bacteria, viruses or germs. Always use proper hygiene and cleaning procedure.

Part#

Warning! This product can expose you to chemicals including lead, which is known to the state of California to cause cancer, and birth defects or other reproductive harm. For more information go to www.p65warnings.ca.gov

© 2024 McGuire Manufacturing Co., Inc. All rights reserved